

ENERGY VALVES S.R.L. Italy a Socio Unico

Via Repubblica, 17

23841 Annone di Brianza (LC) - ITALY

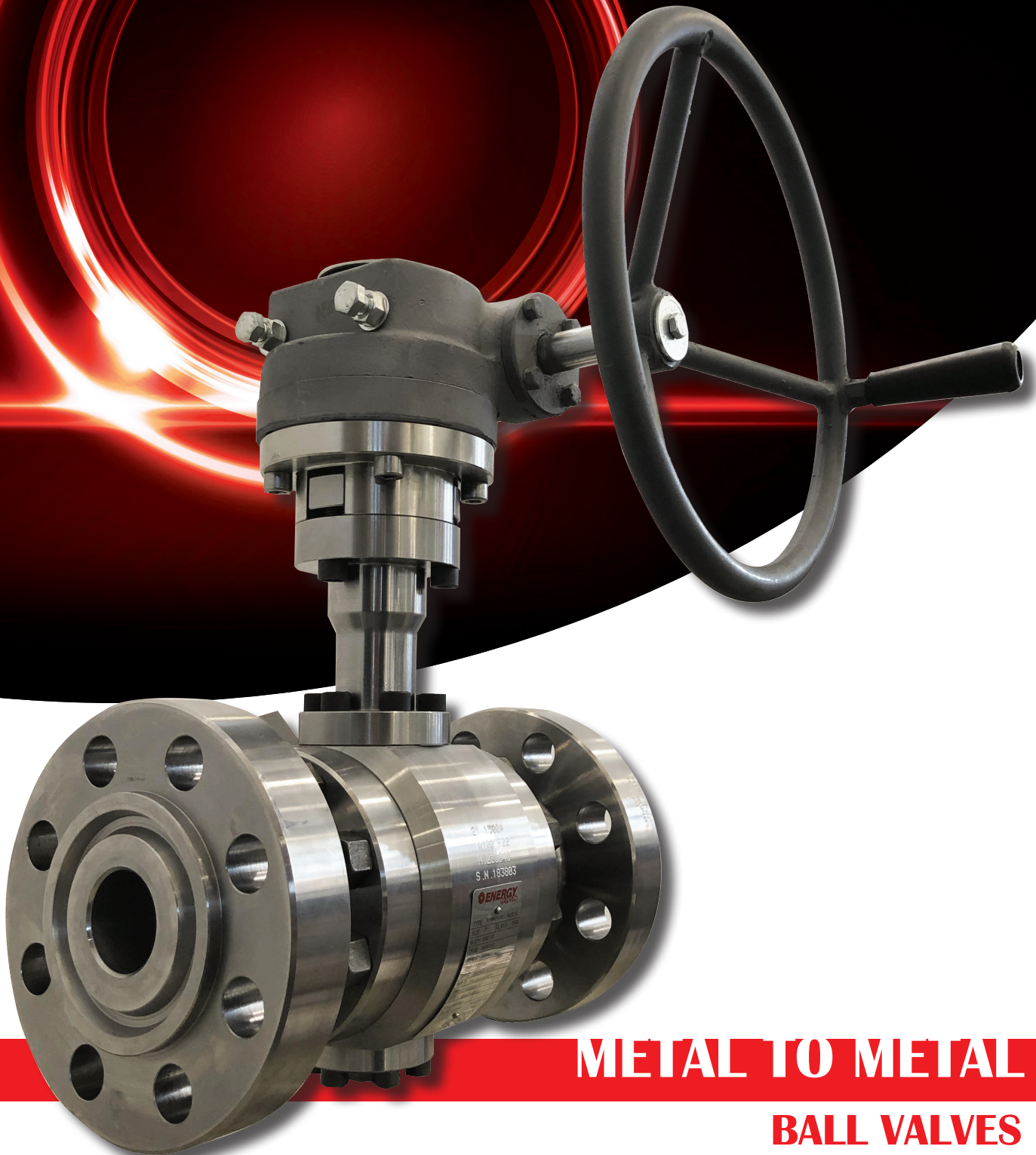
Phone: +39 (0)341 260384

info@energyvalves.it

www.energyvalves.it



 **ENERGY**
VALVES



METAL TO METAL
BALL VALVES

INTRODUCTION

Energy Valves, with headquarter close to Milan - Italy, was founded in 2007 by Engineers with over 30 years experience in valve manufacturing companies.

Energy Valves mission is to design, manufacture, test and certify valves based on client needs and in accordance with the most stringent International Standards and Customer Specifications.

Energy Valves's internal organization is structured in order to achieve very short lead time ensuring the highest quality levels.

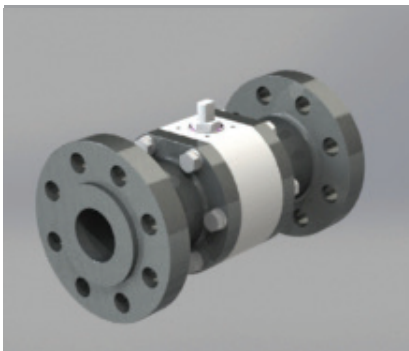
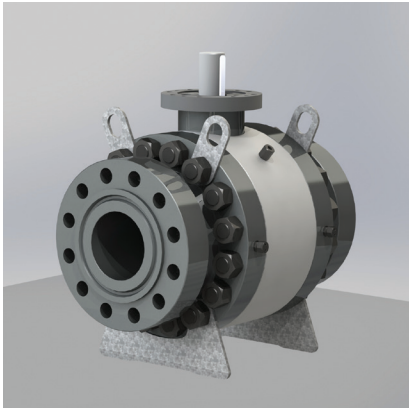
Energy Valves products are used in major applications for upstream, downstream & transportation segments of the Oil & Gas Industry, E&P, Petrolchemical, Chemical, Mining/Minerals, Power, Marine and Industrial markets.

Energy Valves product line includes:

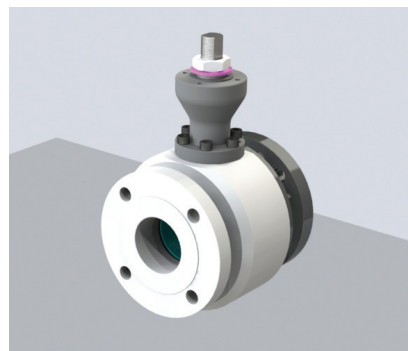
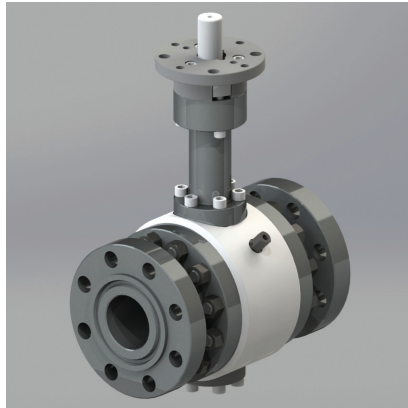
- Trunnion and Floating ball valves for high temperature or abrasive service



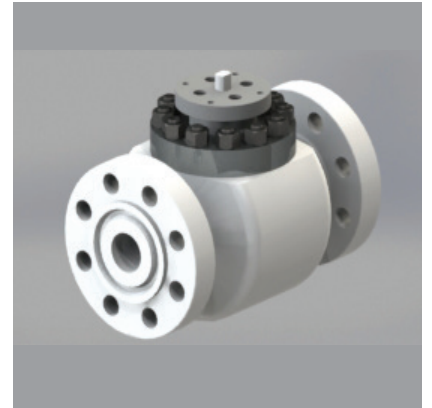
**Side Entry
Trunnion and Floating Metal**



**Side Entry
Trunnion and Floating Metal HT**



**Top Entry
Trunnion and floating Metal**



CERTIFICATION AND STANDARD:

API 6D	Specification for Pipeline and Piping Valves
ASME B16.34	Valves - Flanged, Threaded and Welding End
ISO 17292	Metal ball valves for petroleum, petrochemical and allied industries
API 6FA	Specification for Fire Test for Valves
API 607	Fire Test for Quarter-turn Valves and Valves Equipped with Nonmetallic Seats
ISO 10497	Testing of Valves - Fire Type-testing Requirements
API Q1	Specification for QMS Requirements for Manufacturing Organizations for the Petroleum and Natural Gas Industry
ISO 9001	Quality Management Systems
ATEX	European Directive for Explosive Atmosphere
CE/PED	Pressure Equipment Directive
IEC 61508 & 61511 (SIL)	Measurement of Performance Required for Safety Instrumented Function
TR CU (EAC)	Technical Regulations of the Custom Union

PRODUCT RANGE:

TRUNNION

SIZE:

- From 2" to 24"

PRESSURE CLASS:

- ASME class from 150 to 4500
- DIN class from PN10 to PN420

FLOATING

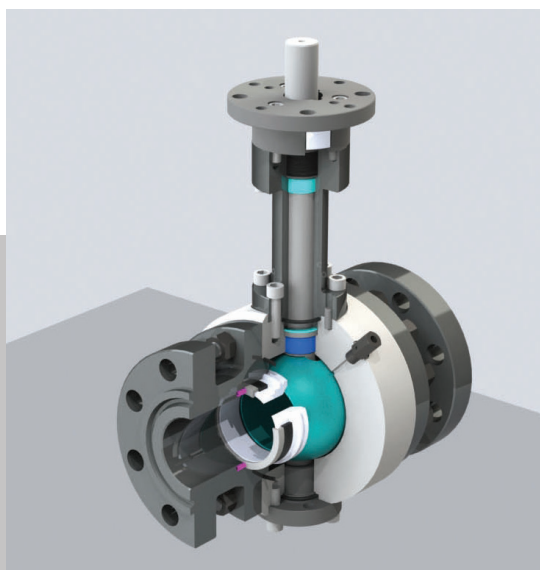
SIZE:

- From ½" to 8"

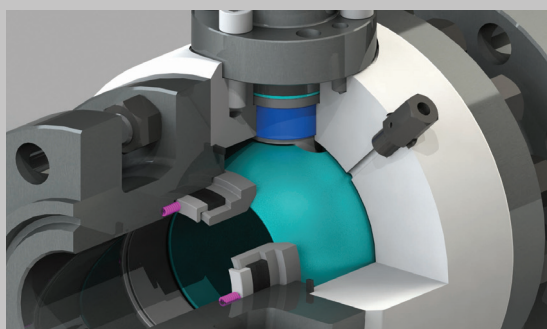
PRESSURE CLASS:

- ASME class from 150 to 2500
- DIN class from PN10 to PN420

TRUNNION METAL

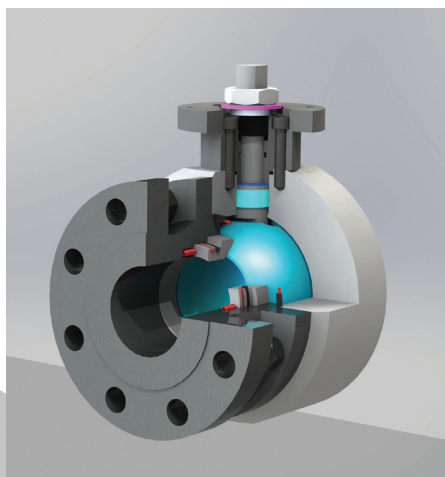


HIGH TEMPERATURE METAL SEAT



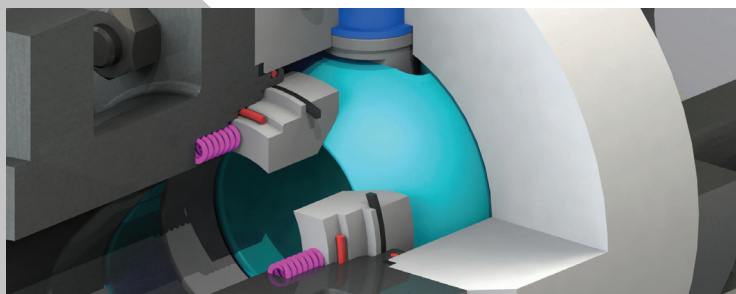
Valves designed for high temperature are provided with graphite seals because the traditional seals (elastomeric, plastic or polymeric) are not able to provide acceptable sealing performance.

ABRASIVE SERVICE METAL SEAT



Valves designed for abrasive service or for operation in temperatures that prohibit the use of a resilient material have seating action provided by the metal-to-metal contact between the ball and seat rings. Seating faces can be hardfaced with Tungsten or Chromium Carbides or with Stellite. The hardfaced sealing faces are subjected to lapping in order to achieve the most stringent tightness classes even in Gas Test.

DPE x DPE



Valves can be designed with two different seat design:

- Single Piston Effect (SPE), which assures unidirectional sealing and guarantees self-relieving action in case of overpressure into the valve body cavity.
 - Double Piston Effect (DPE), which assures bidirectional sealing.
- Three different seat configuration are available:
- Bi-directional self relieving (SPE x SPE)
 - Double Isolation and Bleed DIB-1 (DPE x DPE). Automatic cavity pressure relief feature can be provided.
 - Double Isolation and Bleed DIB-2 (SPE x DPE).