

ENERGY VALVES S.R.L. Italy a Socio Unico

Via Repubblica, 17

23841 Annone di Brianza (LC) - ITALY

Phone: +39 (0)341 260384

info@energyvalves.it

www.energyvalves.it



 **ENERGY**
VALVES



DOUBLE EXPANDING
PLUG VALVES

INTRODUCTION

Energy Valves, with headquarter close to Milan - Italy, was founded in 2007 by Engineers with over 30 years experience in valve manufacturing companies.

Energy Valves mission is to design, manufacture, test and certify valves based on client needs and in accordance with the most stringent International Standards and Customer Specifications.

Energy Valves's internal organization is structured in order to achieve very short lead time ensuring the highest quality levels.

Energy Valves products are used in major applications for upstream, downstream & transportation segments of the Oil & Gas Industry, E&P, Petrochemical, Chemical, Mining/Minerals, Power, Marine and Industrial markets.

Energy Valves product line includes:

- Full and Reduced bore Dual Expanding Plug valves



Reduced bore – Dual Expanding Plug



Full bore – Dual Expanding Plug



CERTIFICATION AND STANDARD:

API 6D	Specification for Pipeline and Piping Valves
ASME B16.34	Valves - Flanged, Threaded and Welding End
API 6FA	Specification for Fire Test for Valves
API 607	Fire Test for Quarter-turn Valves and Valves Equipped with Nonmetallic Seats
ISO 10497	Testing of Valves - Fire Type-testing Requirements
API Q1	Specification for QMS Requirements for Manufacturing Organizations for the Petroleum and Natural Gas Industry
ISO 9001	Quality Management Systems
ATEX	European Directive for Explosive Atmosphere
CE/PED	Pressure Equipment Directive
IEC 61508 & 61511 (SIL)	Measurement of Performance Required for Safety Instrumented Function

PRODUCT RANGE:

FULL BORE

SIZE:

- From 2" to 24"

PRESSURE CLASS:

- ASME class from 150 to 600

REDUCED BORE

SIZE:

- From 2" to 24"

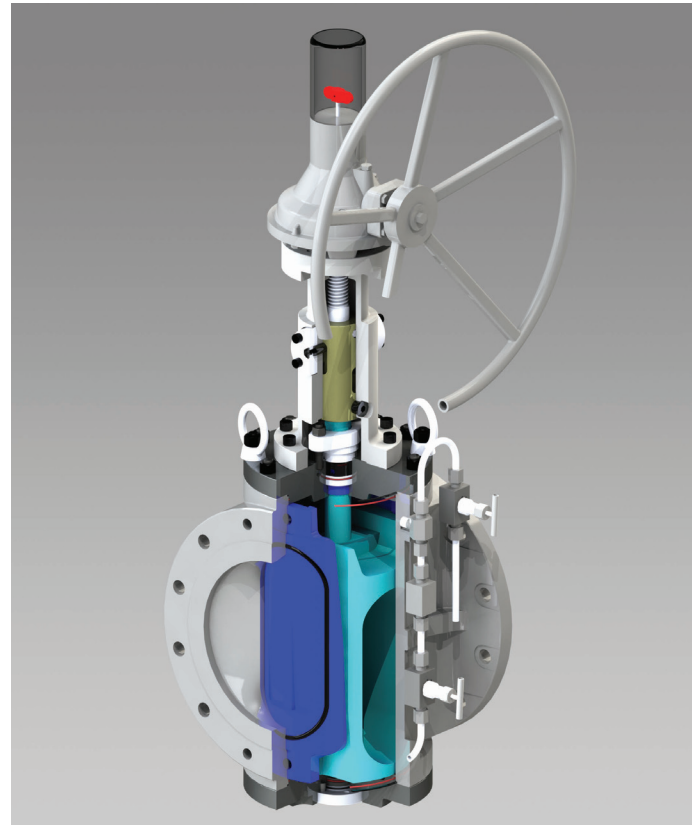
PRESSURE CLASS:

- ASME class from 150 to 600

Energy Valves Dual Expanding plug valve has been developed to provide a compact solution for applications where positive shut-off, verifiable zero leakage and double block and bleed (DB&B) and or double isolation and bleed (DIB) capabilities are required. Unlike other valve types, the Energy Valves Dual Expanding plug valve guarantees bubble tight seal without causing any abrasion or wear on the slips seals due to its mechanism of retract/expand the slips from/to the body before starting with rotation.

This solution provide “Zero-leakage” upstream and downstream, secure a long life-time of valves and seals as well as a low opening and closing torque.

This unique design is combined with a bleed function to prevent pressure buildup in the body cavity. Several types of bleed system have been developed and can also be customized based on client needs.

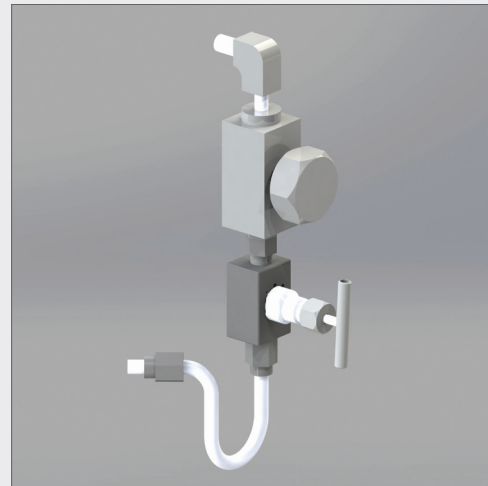


Manual Body Bleed

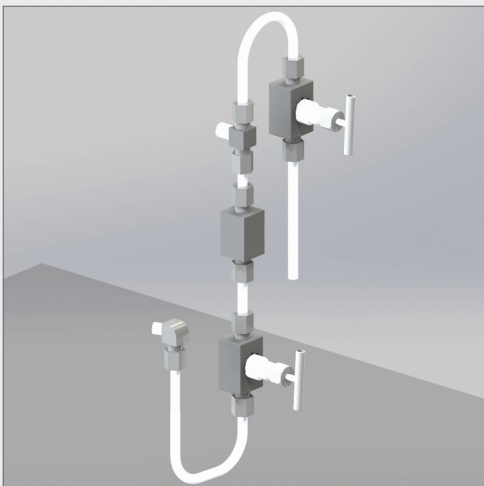
Hand operated bleed valve.



Thermal Relief to Body



Manual Bleed and Thermal Relief



This system includes a thermal relief valve in order to relieve to upstream pressure build up which might occur in the body cavity from thermal expansion. The thermal relief valve automatically operates when the pressure in the body cavity increase of 1.5 Bar (22psi) respect to the pipeline pressure.

This system combines an automatic bleed to the body and a way to check the seal integrity of the Dual Expanding Plug Valve.