

ENERGY VALVES S.R.L. Italy a Socio Unico

Via Repubblica, 17

23841 Annone di Brianza (LC) - ITALY

Phone: +39 (0)341 260384

info@energyvalves.it

www.energyvalves.it



 **ENERGY**
VALVES



CRYOGENIC

BALL VALVES

INTRODUCTION

Energy Valves, with headquarter close to Milan - Italy, was founded in 2007 by Engineers with over 30 years experience in valve manufacturing companies.

Energy Valves mission is to design, manufacture, test and certify valves based on client needs and in accordance with the most stringent International Standards and Customer Specifications.

Energy Valves's internal organization is structured in order to achieve very short lead time ensuring the highest quality levels.

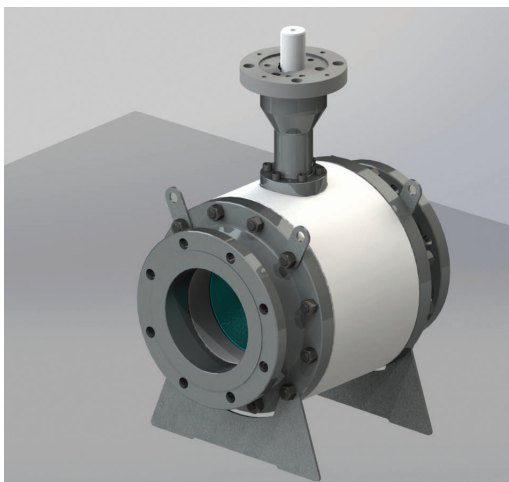
Energy Valves products are used in major applications for upstream, downstream & transportation segments of the Oil & Gas Industry, E&P, Petrochemical, Chemical, Mining/Minerals, Power, Marine and Industrial markets.

Energy Valves product line includes:

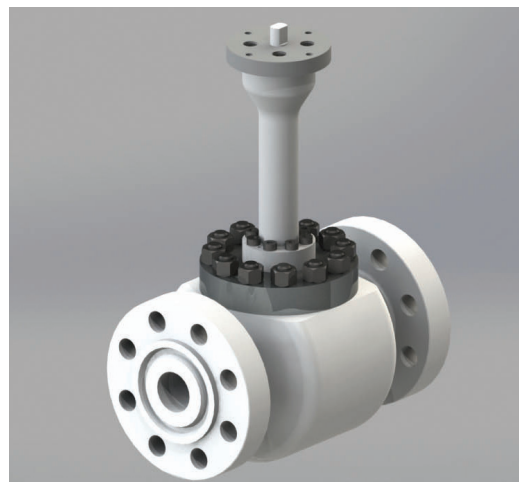
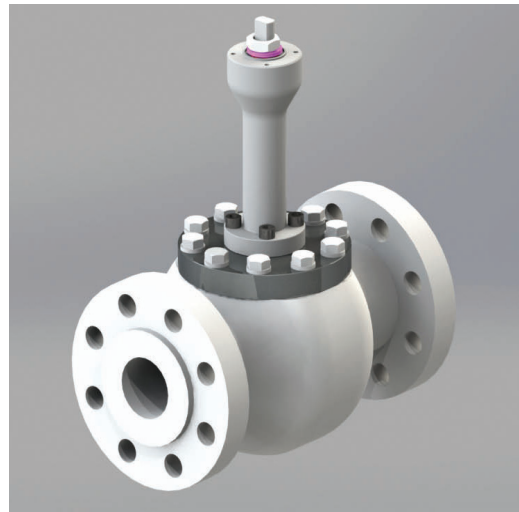
- Trunnion and Floating ball valves for low temperature and cryogenic service



**Side Entry
Floating and Trunnion Cryogenic**



**Top Entry
Floating and Trunnion Cryogenic**



CERTIFICATION AND STANDARD:

API 6D	Specification for Pipeline and Piping Valves
ASME B16.34	Valves - Flanged, Threaded and Welding End
BS 6364	Valves for Cryogenic Service
ISO 17292	Metal ball valves for petroleum, petrochemical and allied industries
API 6FA	Specification for Fire Test for Valves
API 607	Fire Test for Quarter-turn Valves and Valves Equipped with Nonmetallic Seats
ISO 10497	Testing of Valves - Fire Type-testing Requirements
API Q1	Specification for QMS Requirements for Manufacturing Organizations for the Petroleum and Natural Gas Industry
ISO 9001	Quality Management Systems
ATEX	European Directive for Explosive Atmosphere
CE/PED	Pressure Equipment Directive
IEC 61508 & 61511 (SIL)	Measurement of Performance Required for Safety Instrumented Function
TR CU (EAC)	Technical Regulations of the Customs Union

PRODUCT RANGE:

TRUNNION

SIZE:

- From 2" to 24"

PRESSURE CLASS:

- ASME class from 150 to 4500
- DIN class from PN10 to PN420

FLOATING

SIZE:

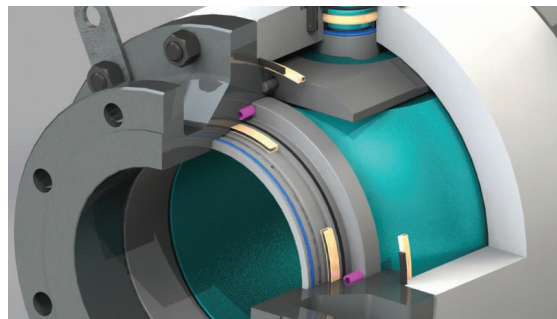
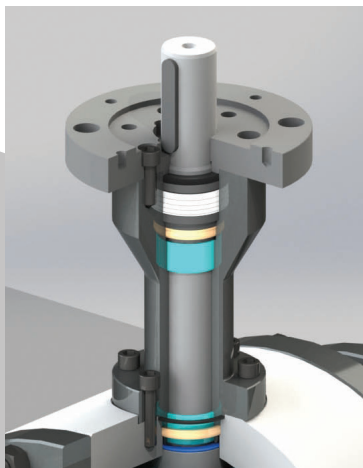
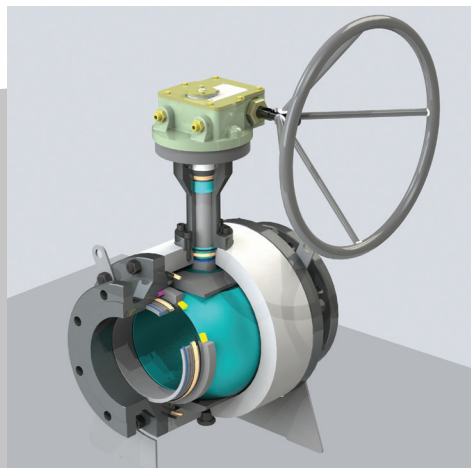
- From ½" to 8"

PRESSURE CLASS:

- ASME class from 150 to 2500
- DIN class from PN10 to PN420

Valves for extreme low temperature service are designed with extended bonnet having sufficient gas column length to keep the stem seal packing exposed only to vapour and not the cold liquid. The extended bonnet length can comply to BS 6364, MESG or other customer requirements.

Where o-rings are not suitable for service condition, valves can be provided with lip seals on both static and dynamic sealing areas.



SPECIAL TEST

Energy Valves can perform in house cryogenic test up to -196°C, including Fugitive emission test even in Gas Test.