



**ENERGY**

**VALVES**



ENERGY VALVES SRL, ITALY

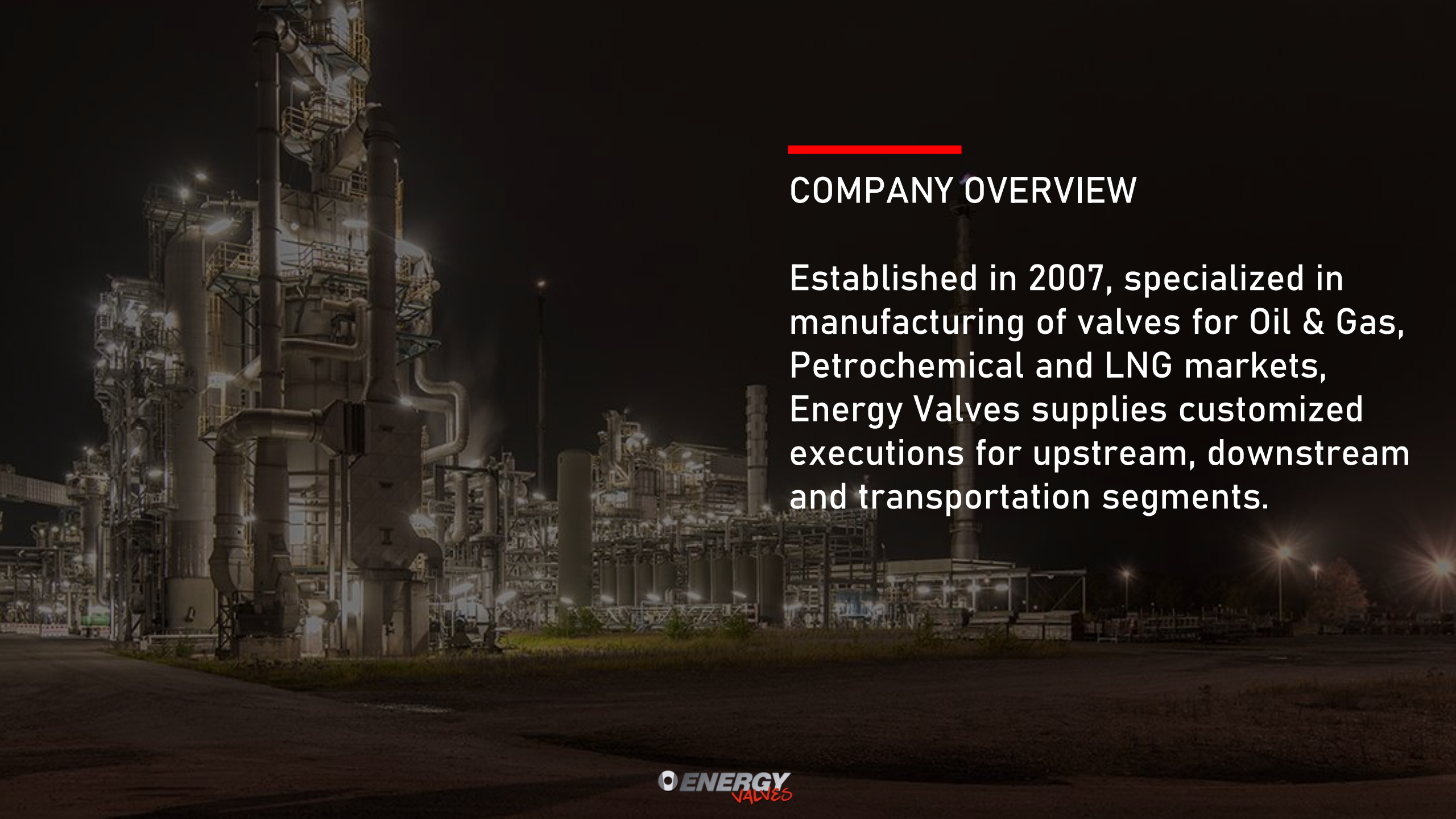
PRODUCTION 6000 SQUARE METERS

OFFICES 1000 SQUARE METERS

LIFT CAPACITY 15 TON

VALVE SIZE UP TO 42" CLASS 600

Our employees are our most  
valuable assets.



---

## COMPANY OVERVIEW

Established in 2007, specialized in manufacturing of valves for Oil & Gas, Petrochemical and LNG markets, Energy Valves supplies customized executions for upstream, downstream and transportation segments.





---

## COMPANY MISSION

Energy Valves internal organization is structured in order to achieve very short lead times, ensuring the highest quality levels at all times.

**Energy Valves mission is to design and manufacture valves, based on Client needs, in accordance with the most stringent international standards and Customer specifications.**



---

## CERTIFICATIONS

ISO 9001 / ISO 45001 / ISO 14001

ISO 15848-1 / ISO 10497

IEC 61508-SIL3

API 6D / API 6FA / API 607

PED 2014-68-UE Cat. 3 Module H

ATEX 2014-34-UE

EAC032-RU / EAC012-RU / EAC010-RU

AD2000 / DVGW

**ENERGY VALVES**

Via per Olgiate Molgora 26 - Brivio (LC) ITALY

TYPE

TRUNNION BALL VALVE

2"x1.1/2"

CLASS

210046009019  
ASTM A350

1500#

A564

ENERGY VALVES





---

## PRODUCT RANGE

PLUG VALVES

BALL VALVES

MONOFLANGE VALVES

GATE VALVES

GLOBE VALVES

CHECK VALVES

BUTTERFLY VALVES

The ever changing needs of our Customers drive us to offer continuous innovations and an improved valve range, to meet the most challenging applications in production and process services.



A large, grey industrial valve is the central focus, positioned in a factory or workshop. The valve has a large, circular opening and is surrounded by various mechanical components and pipes. In the background, there are wooden crates and other industrial equipment. The lighting is bright, highlighting the metallic surfaces of the valve.

---

**PLUG VALVES**

**LUBRICATED  
DOUBLE SEALING  
JACKETED  
DOUBLE PLUG  
3 & 4 WAY**





**BALL VALVES**

**TOP ENTRY / SIDE ENTRY**

**DBB / DIB1 / DIB2**

**DOUBLE BALL**

**JACKETED**

**FULLY WELDED**

**3 & 4 WAY**





**MONOFLANGE VALVES**

**SINGLE BLOCK & BLEED**

**DOUBLE BLOCK & BLEED**





---

# OTHER VALVES

GATE VALVES

GLOBE VALVES

CHECK VALVES

BUTTERFLY VALVES





---

## APPLICATIONS

LOW EMISSION VALVES

METAL SEATED / PMSS VALVES

CRYOGENIC VALVES  $-196^{\circ}\text{C}$

HIGH TEMPERATURE VALVES  $+538^{\circ}\text{C}$

HIGH PRESSURE VALVES

HIPPS / ESD ACTUATED VALVES

Energy Valves engineering customizes valves to withstand industry demands in Oxygen, CO<sub>2</sub>, Geothermal and Hydrogen applications.



**TESTING  
AREA**

---

**IN HOUSE TESTING EQUIPMENT**

**HIGH PRESSURE GAS**

> 700bar

**HORIZONTAL TEST BENCHES**

> 1400 ton 700bar

> 400 ton 1000bar

**VERTICAL TEST BENCHES**

> 150-50-17 ton 700bar

**NON DESTRUCTIVE Examinations**

> VT / UT / PT / MT / LT & PMI



---

## INDIPENDENT MACHINING SHOP

PRODUCTION 3200 SQUARE METERS

OFFICES 450 SQUARE METERS

MACHINING / ASSEMBLING / TESTING

LIFT CAPACITY 10 TON

TURNING CAPACITY 2000 mm

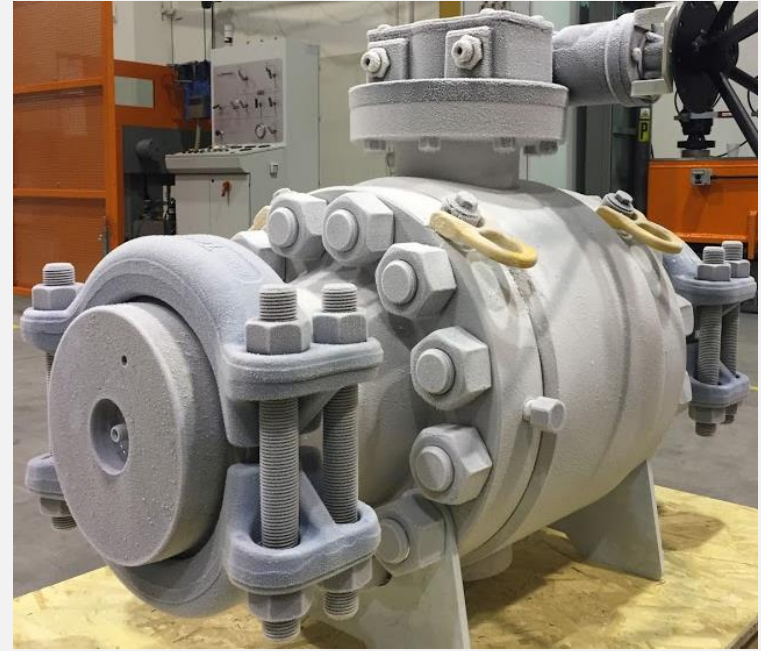
WEIGHT CAPACITY 10 TON

RB SRL is a modern workshop with high-tech machinery and a digital 4.0 certified manufacturing process system.

---

# PHOTO GALLERY









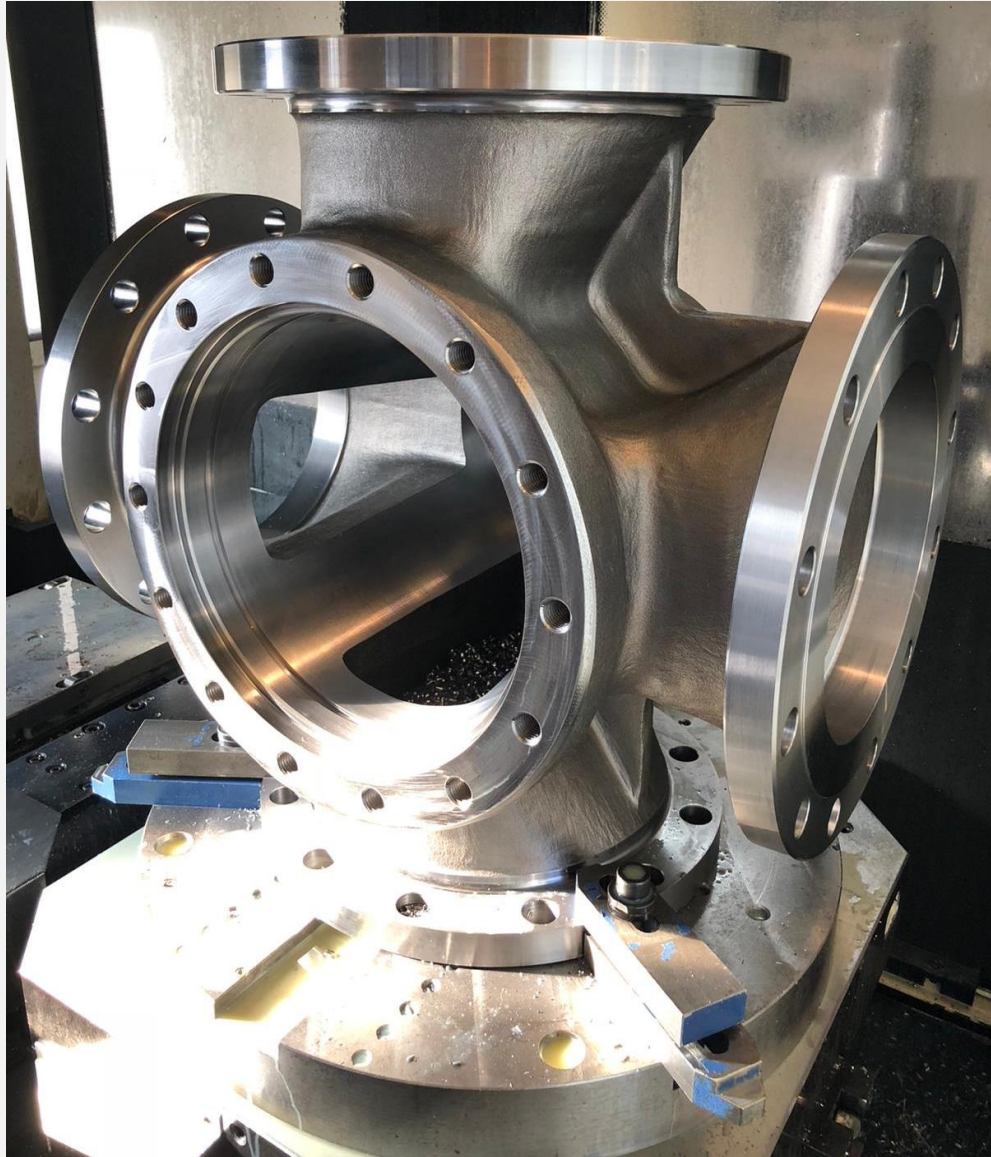




















ENERGY VALVES SRL

Via per Olgiate Molgora, 26  
23883 Beverate di Brivio (LC), Italy  
[www.energyvalves.it](http://www.energyvalves.it)

Phone +39 0341 260384  
[sales@energyvalves.it](mailto:sales@energyvalves.it)





One step ahead.